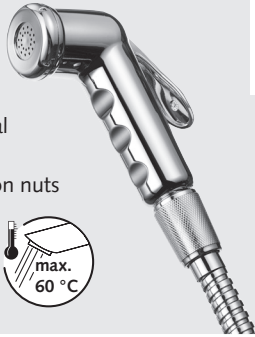




**SCHELL Hand Showers Bidet  
with holder and flexible connection hose.  
By SCHELL.**

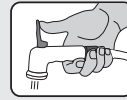
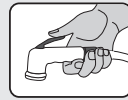
**03 295 06 99**  
**SCHELL Hand Shower Bidet**

- Holder with fastening material
- Connection hose, metall length 1,2 m with G 1/2 union nuts



**03 097 06 99**  
**SCHELL Design Hand Shower Bidet**

- Holder with fastening material
- Connection hose, plastic length 1,2 m with G 1/2 union nuts



Automatic water closing

Continuous flow

**Recommended associated item:**

**03 570 06 99**  
**SCHELL Combination angle valve COMFORT**

- appliance valve with backflow preventer (BP, DIN EN 1717: EB)
- long push rod and rosette Ø 54 mm

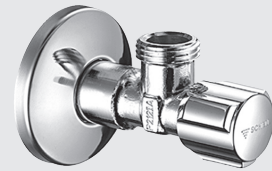
DN 15 G 1/2 external thread



**05 217 06 99**  
**SCHELL Angle valve with regulating function COMFORT**

- with COMFORT handle
- long push rod and push rosette Ø 54 mm

DN 15 G 1/2 external thread



**05 346 06 99**  
**SCHELL Angle valve with regulating function**

- with three-cornered handle
- push rosette Ø 54 mm
- flow class A

DN 15 G 1/2 external thread



**05 431 06 99**  
**SCHELL Angle valve with regulating function COMFORT and filter**

- filter, mesh gauge: 250 µm
- long push rod and push rosette Ø 54 mm
- for flat gasket
- flow class A

DN 15 G 1/2 external thread



**28 612 06 99**  
**SCHELL anti-vacuum device**

- in flow form, version C (RB, EN 1717: HB)
- for mounting on AC valves with backflow preventers, without anti-vacuum device
- in accordance with EN 1717 (safety combination with BP + AVD)
- DIN-DVGW certified

DN 15 G 1/2 int./ext. thread



**03 460 06 99**  
**SCHELL draw-off tap BIBCOCK**

- mix-draw-off tap with COMFORT handle
- rosette Ø 57 mm, height 8 mm
- aerator
- ceramic isolating valve

DN 15 G 1/2 external thread



**28 617 06 99**  
**SCHELL anti-vacuum device for hose connection combined with backflow preventer**

- flow-through pattern from top to bottom, safety combination in accordance with EN 1717: HD
- backflow preventer (BP, DIN EN 1717: EB)
- anti-vacuum device in flow form (AVD, DIN EN 1717: HB)

DN 15 G 1/2 int./ext. thread



**Presented by:**